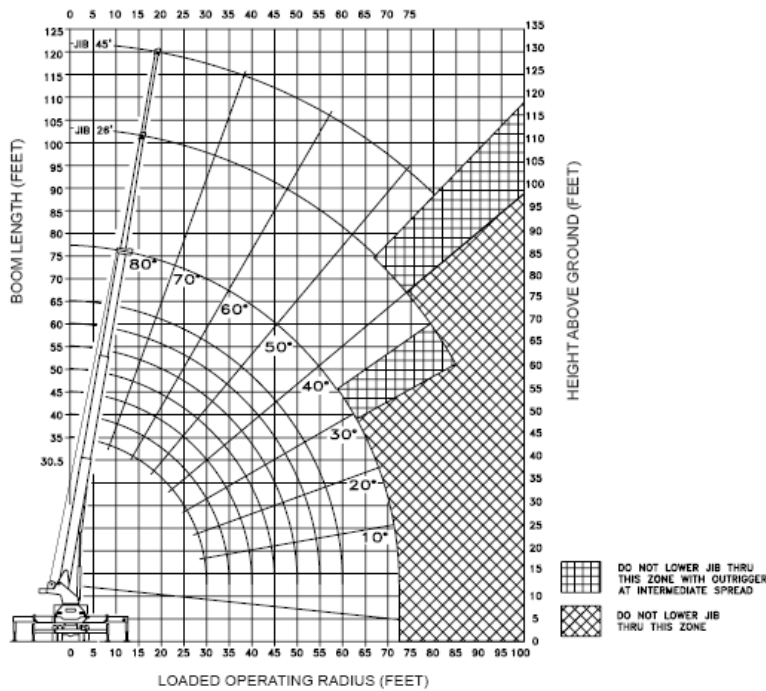


FEATURES AND SPECIFICATIONS

MAXIMUM RATED LOAD IN LBS. WITH OUTRIGGERS FULLY EXTENDED												FIXED JIB		26 / 45' TELESCOPIC JIB								
LOADED OPERATING RADIUS	LOADED BOOM ANGLE	RETRACTED BOOM LENGTH	LOADED BOOM ANGLE	BOOM LENGTH	LOADED BOOM ANGLE	BOOM LENGTH	LOADED BOOM ANGLE	BOOM LENGTH	LOADED BOOM ANGLE	BOOM LENGTH	LOADED BOOM ANGLE	BOOM LENGTH	LOADED BOOM ANGLE	EXTENDED BOOM LENGTH	LOADED BOOM ANGLE	FIXED JIB	LOADED BOOM ANGLE	JIB RETRACTED	LOADED BOOM ANGLE	JIB EXTENDED		
FEET	°	30' 2"	°	35 ft	°	45 ft	°	55 ft	°	65 ft	°	74' 8"	°	26 ft	FIXED JIB	°	26 ft	°	45 ft			
10	85	47,000	88	45,000	73	44,000	78	43,000														
12	60	41,000	85	40,000	71	39,000	74	38,000	77	37,000												
15	54	35,000	59	33,000	66	32,000	71	31,000	74	30,500	76	29,000										
20	40	26,000	49	25,500	59	25,000	65	24,500	69	24,000	72	23,000	77	8,750	77	8,500						
25	21	20,000	37	20,000	52	20,000	60	20,000	65	20,000	68	19,000	74	8,000	74	7,750	77	4,850				
30			21	16,000	43	16,500	53	15,500	60	15,500	64	15,500	71	6,400	71	6,150	74	4,150				
35					32	12,000	46	12,000	54	12,000	59	12,000	68	5,500	68	5,250	72	3,850				
40					17	9,500	39	9,500	49	9,500	55	9,500	65	4,800	65	4,550	69	3,550				
45							29	7,700	42	7,700	50	7,700	62	4,250	62	4,000	67	3,200				
50							15	6,500	35	6,500	45	6,500	59	3,750	59	3,500	64	2,770				
55									27	5,300	39	5,300	55	3,500	55	3,250	61	2,450				
60									14	4,500	33	4,500	52	3,200	52	2,950	59	2,250				
65											24	3,900	48	2,830	48	2,580	56	2,050				
70												12	3,300	44	2,500	44	2,250	53	1,850			
75														40	2,400	40	2,150	50	1,750			
80															35	2,050	35	1,800	46	1,600		
85															29	1,850	29	1,600	43	1,200		
90																			40	750		
		720		482		360		290		240		220		FIXED								
		800		605		450		380		300		275		TELESCOPIC								

RATINGS ABOVE THE HEAVY LINE ARE BASED ON STRUCTURAL COMPETENCE AND NOT ON MACHINE STABILITY.

NOTE: Ratings above the heavy line are based on structural competence and not machine stability. Deductions must be made from rated loads for lifting accessories: overhaul balls, load hooks, snatch blocks and load blocks.



Maximum Loads 5/8" Cable	
 1 Part Line 9,000 lbs	 4 Part Line 36,000 lbs
 2 Part Line 18,000 lbs	 5 Part Line 45,000 lbs
 3 Part Line 27,000 lbs	 6 Part Line 54,000 lbs