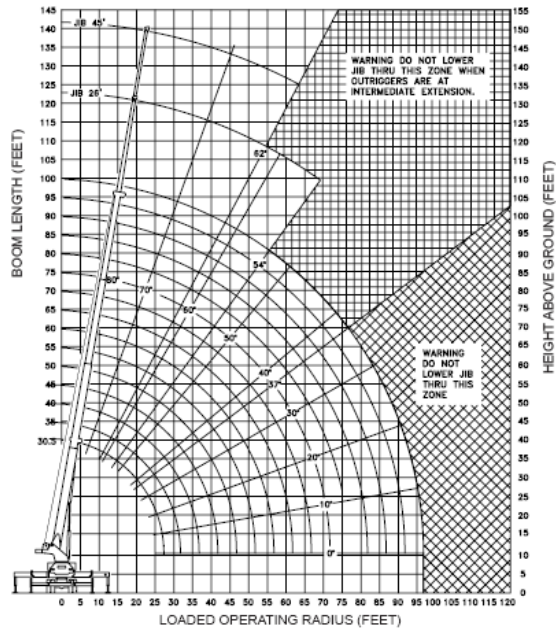


LOAD CHARTS AND SPECIFICATIONS

MAXIMUM RATED LOAD IN LBS. WITH OUTRIGGERS FULLY EXTENDED														FIXED JIB		26 / 45° TELESCOPIC JIB			
LOADED OPERATING RADIUS	LOADED BOOM/ANGLE	RETRACTED BOOM LENGTH	LOADED BOOM/ANGLE	BOOM LENGTH	LOADED BOOM/ANGLE	BOOM LENGTH	LOADED BOOM/ANGLE	BOOM LENGTH	LOADED BOOM/ANGLE	BOOM LENGTH	LOADED BOOM/ANGLE	EXTENDED BOOM LENGTH	LOADED BOOM/ANGLE	FIXED JIB	LOADED BOOM/ANGLE	JIB RETRACTED	LOADED BOOM/ANGLE	JIB EXTENDED	
FEET	^	30' 2"	^	45 ft	^	60 ft	^	75 ft	^	90 ft	^	96' 11"	^	26 ft	^	26 ft	^	45 ft	
10	71	47,000	77	44,000	80	23,500													
12	67	41,000	75	39,000	79	23,000	81	22,000											
15	60	35,000	71	32,000	76	22,500	79	22,000	80	21,500	81	13,000							
20	49	26,000	64	25,000	71	22,000	75	21,000	77	20,000	78	13,000							
25	34	20,000	56	20,000	65	19,500	71	18,000	74	16,000	75	13,000	78	8,000	78	7,400			
30			48	15,500	60	15,000	66	14,500	71	14,000	72	13,000	76	7,000	76	6,400	80	4,650	
35			38	12,000	54	11,900	62	11,800	67	11,900	69	12,000	74	5,950	74	5,400	78	4,300	
40			27	9,500	48	9,450	58	9,100	64	9,250	66	9,300	71	5,400	71	4,850	76	3,900	
45					41	9,150	53	8,800	60	7,450	62	7,500	69	4,700	69	4,200	75	3,500	
50						33	8,800	48	8,200	56	6,050	59	6,100	66	4,300	66	3,900	73	3,000
55						21	8,200	43	7,600	52	5,050	55	5,100	63	3,900	63	3,450	71	2,750
60							37	7,100	48	4,150	52	4,200	61	3,650	61	3,250	69	2,500	
65							30	6,300	44	3,400	49	3,500	58	3,300	58	2,950	67	2,300	
70									39	2,850	44	2,900	55	3,050	55	2,750			
75										34	2,350	39	2,400						
80										27	1,900	35	1,900						
85												29	1,600						
90													22	1,200					
		720		482		360		290		240		220	FIXED						
		900		605		450		360		300		275	TELESCOPIC					DEDUCTIONS FOR STOWED JIB (LBS)	

NOTE: Ratings above the heavy line are based on structural competence and not machine stability. Deductions must be made from rated loads for lifting accessories: overhaul balls, load hooks, snatch blocks and load blocks.



Maximum Loads 5/8" Cable	
1 Part Line 9,000 lbs	4 Part Line 36,000 lbs
2 Part Line 18,000 lbs	5 Part Line 45,000 lbs
3 Part Line 27,000 lbs	6 Part Line 54,000 lbs