

# WELDCO HYDRA-LIFT

## Hydra-lift

# HL30TC85 (new WHL4010-85)

A 30 ton lifting capacity and short stowed boom length makes the HL30TC85 (new WHL4010-85) ideal for heavy work in the oilpatch. The HL30TC85 (new WHL4010-85) can be mounted on either a single or double steering axle chassis.

### Features:

- 40,100 lbs at 10' radius (30-ton lifting capacity)
- 60,000 lbs lifting capacity
- 85' sheave height
- 30' retracted boom length
- 15,000 lb planetary winch
- 3 section fully proportional boom
- Optional continuous rotation
- Planetary drive rotation gear box
- A-frame link style main outriggers
- Dual control consoles and platforms

### Benefits:

- High strength box construction, welded booms for maximum strength to weight ratio
- Planetary type winch with integral brake for high efficiency and security
- Standard audible capacity alert system
- Standard audible outrigger warning alarm



### Optional Equipment:

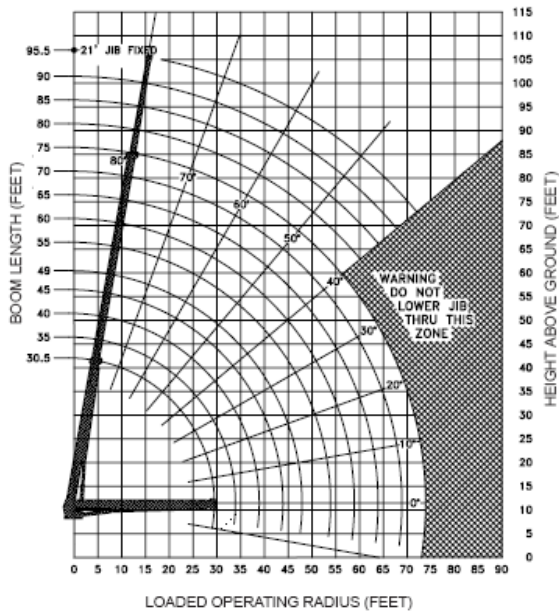
- Fixed swing around jib, stows along side of boom
- Snatch block and crane blocks for multi-part line operation
- "Tractor Mount Package" for operating controls from behind the crane
- "Deck Mount" oil reservoir available for Tractor package
- Hydraulic tank heater
- Digital radio weight indicator
- Boom lights

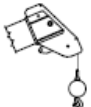
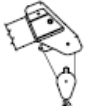


# FEATURES AND SPECIFICATIONS

MAXIMUM RATED LOAD IN LBS. WITH OUTRIGGERS FULLY EXTENDED														
Loaded Operating Radius	Loaded Boom Angle	Retracted Boom Length	Loaded Boom Angle	Boom Length	Loaded Boom Angle	Boom Length	Loaded Boom Angle	Boom Length	Loaded Boom Angle	Boom Length	Loaded Boom Angle	21 ft Jib Erected	Loaded Boom Angle	21 ft Jib Erected
ft	°	30ft 6in	°	40 ft	°	50 ft	°	60 ft	°	70 ft	°	74ft 6in	°	95ft 9in
10	72	40,000	76	37,500	79	36,500								
12	68	34,500	73	32,000	77	32,000	79	31,000						
14	63	30,000	70	28,500	74	27,000	77	27,000	79	26,500				
16	58	27,000	67	25,500	72	24,500	75	24,000	77	23,000	79	23,000		
18	54	23,500	64	23,000	69	22,000	73	21,500	75	20,000	76	20,000	78	7,000
20	49	20,500	61	20,500	67	20,000	71	19,500	74	19,000	75	19,000	77	7,000
25	33	15,500	52	16,000	60	16,000	66	16,000	69	15,000	71	15,000	74	7,000
30			42	12,500	53	12,500	60	12,500	66	12,500	66	12,500	71	7,000
35			28	10,000	46	10,000	55	10,000	60	10,000	62	10,000	68	7,000
40					37	8,500	48	8,500	55	8,500	58	8,500	64	7,000
45					25	7,000	41	7,000	50	7,000	53	7,000	61	7,000
50							33	6,000	44	6,000	48	6,000	57	5,800
55							22	5,000	38	5,000	42	5,000	54	5,000
60									31	4,200	36	4,200	50	4,200
65									21	3,500	29	3,500	46	3,600
70											19	3,000	42	3,000
Deductions for stowed Jib		500 lbs		450 lbs		400 lbs		400lbs		350 lbs		300 lbs		

Ratings above the heavy line are based on structural competence and not machine stability.

**NOTE:** Deductions must be made from rated loads for lifting accessories: overhaul balls, load hooks, snatch blocks and load blocks.



Maximum Load (lbs)	Cable Size (in)	
	9/16	5/8
1 Part Line 	7,500	8,700
2 Part Line 	15,000	17,400
3 Part Line 	22,500	26,100
4 Part Line 	30,000	34,800