

TECHNICAL SPECIFICATION

WORKSHOP – LUBRICATION TRUCK

High Quality Product - MADE IN GERMANY

Custom-made

According to customer-specific requirements



The **Mobile Workshop** can be used for different kind of applications. The truck mounted workshop offers a universal support for various maintenance, repair and service works.

Equipped with an on-board power supply, crane with winch, air-compressor, lubrication equipment and versatile tool sets the Mobile Workshop is ready for any intended use.

Due to the rigid substructure and the robust shelter configuration the Mobile Workshop has a good performance going cross country and less limitations for the place of deployment.

Dimensions of workshop (outside)

Length: approx. 6 000 mm
Width: approx. 2 500 mm
Height: approx. 2 200 mm

All data mentioned above, are approximations. Depending on additional options and accessories as well as the selected tractor unit, deviations are possible

Sub frame

The “*Special Low-Torsion body mounting system*” is recommendable due to their strongness, torsion-resistant design, in particular for “off-road” operation under rough cross-country conditions. The elastic connections between the truck chassis and the sub-frame provide a torsion-absorbing function. This arrangement absorbs any stresses passing from chassis to body.

The sub-frame is mounted to the truck frame in a way to ensure equal load distribution. Otherwise mounted according to truck supplier’s “Assembling Instruction”.

Substructure etc. hot-dip galvanized (can be painted on customers request)

Body

Heavy-duty execution made of corrugated steel panels, strongly welded together with inner coating.

The body structure and all other components are designed for ambient temperature of up to 55°C with extreme high humidity (100%).

The floorboard consists on the upper side of additional waterproofed plywood reinforcements and covered with aluminium chequered plate with integrated drainage pipes. On each side of the side-walls, two (2) sliding windows of reasonable size are installed.

Rear opening

Winged rear door, opening 270 degree, to be opened from in- and outside, robust security locking bar and padlock (container type). The door has one window, of reasonable size. Folding stairs, retractable, made of galvanised steel for easy access to generator and welding machine.

Side opening

Winged side door on right-hand side (or left-hand side) of the body with opening 180 degree, to be opened from in- and outside, robust security locking bar and padlock (container type). Door has one (1) window, of reasonable size.

Folding stairs, retractable, made of galvanised steel for easy access to body platform

Electrical installation 24 V. / 220 V. / 400 V.

24V-system is connected to electrical system of the vehicle

Two (2) ceiling lamps each 20W, with separate switches

One (1) outlet 24V inside shelter, mounted on side-wall

Additionally one separate diesel genset **220 V. / 400 V.** with complete wiring inside workshop container

Standard accessories

Wheel chokes (provided by TRUCK supplier) mounted with brackets

One (1) spare wheel carrier mounted

PVC mudguards with rubber mud-flaps mounted over rear axle group

One (1) lockable tool box, mounted on chassis

Paintwork and finishing

All steel parts are sand-blasted and prime-coated.

Body painted in one RAL colour.

Substructure etc. hot-dip galvanized (can be additionally painted on customers request)

Documentation

One (1) spare part list (Paper and USB-Stick)

One (1) operating manual (Paper and USB-Stick)

All instruction plaques, lists, manuals and signs in English language (français sur demande)

Reserve the right to modify or change Specification at any time!

Delivery time (ex works): Start of delivery approx. 10 -14 weeks after receipt of written order confirmation and clarification of all technical and commercial issues and approx. 6-8 weeks after delivery of truck chassis.

Warranty: Starting from date of vehicle taking over, 12 months unconditional warranty on body and welded construction. The warranty is limited to the repair or replacement of broken parts due to construction faults and does not cover damage caused by improper use.

Please do not hesitate to contact us for further information and your special requirements.

All trucks and workshop / lubrication containers are **custom-made.**

**High Quality Product
MADE IN GERMANY**

Some names of actual companies and products, mentioned herein may be trademarks. They are used for reference purpose only and are property of the respective owners.

TOOLS AND EQUIPMENT LIST

We can offer you, according to your individual requirements, a comprehensive range of accessories.

Pos	Part	Description
1.	1 x steel locker	Lockable steel locker mounted Height: approx. 1 900 mm Width: approx. 1 200 mm Depth: approx. 500 mm
2.	1 x workbench with one drawer rack with parallel vice	<u>Length</u> : approx. 1400mm <u>Width</u> : approx. 800mm Height: approx. 840mm Thickness of plate: approx. 40mm High quality rack with 5 steel drawers. All drawers with secured openers Solid parallel vice, mounted on workbench. Vice made of forged steel, machined, hardened and tempered. Width of jaw: 140 mm Tightening range: 170 mm
3.	1 x air compressor, hydraulic driven	One (1) air compressor, 200 ltr tank, driven hydraulically by the PTO of the truck. Hydraulic system equipped with oil-cooler. Air volume: approx. 1,0m ³ /min Capacity: approx. 15kW Pressure: till 12bar System completed with all necessary safety valves, pressure regulator, two (2) pressure gauges and connected to each pneumatic driven pump.
4.	1 x air hose with pistol	Blow pistol with hit protection. Aluminium. Nozzle Ø: 1,5 mm Connection port: 6mm Reinforced pressure hose (15m) with quick coupling and tyre inflator

5. 1 x power pack Power pack 4,5 KVA, consisting of a diesel engine, with a 3 phase generator 220V / 380V, 50Hz
Emergency-stop button.
Power of genset on customer requirement.
6. 3 x oil pumps and hose-reels with 250 ltr steel tanks Three (3) 250 ltr round steel tanks, stored and secured at appropriate position on platform.
Ø585mm, height approx. 1 020mm
Tanks are stored on an over-spill basin, made of galvanized steel frame, rough perforated grid and drainage valve. Tanks are equipped with one (1) filling lid and one (1) discharge pipe with shut-off valve each
Three (3) pneumatically driven oil-pumps with spring loaded hose-reels. Hose-reels with 15m hose, integrated flow-meter and discharge nozzle.
Flow-rate depends on the density of the oil.
7. 1 x oil pump and hose-reel with 640 ltr tank for engine oil One (1) 640 ltr IBC storage tank, stored and secured at appropriate position on platform.
L: 1 200mm, W: 800mm, H: 1 000mm each
Tank mounted on steel grade for handling with fork-lift.
Tank is equipped with one (1) filling lid and one (1) discharge pipe with shut-off valve each.
One (1) pneumatically driven oil-pump with spring loaded hose-reel. Hose-reel with 15m hose, integrated flow-meter and discharge nozzle.
Flow-rate depends on the density of the oil.

8. 1 x oil pump and hose-reel with 640 ltr tank for hydraulic oil
- One (1) 640 ltr IBC storage tanks, stored and secured at appropriate position on platform.
 L: 1200 mm, W: 800mm, H: 1 000mm each
 Tank mounted on steel grade for handling with fork-lift.
 Tank is equipped with one (1) filling lid and one (1) discharge pipe with shut-off valve each.
 One (1) pneumatically driven oil-pump with spring loaded hose-reel. Hose-reel with 15m hose, integrated flow-meter and discharge nozzle.
 Flow-rate depends on the density of the oil.
9. 1 x waste-oil pump and hose-reel with 1000ltr tank
- One (1) 1000 ltr storage tank, stored and secured at appropriate position on platform.
 Tank mounted on steel grade for handling with fork-lift.
 Tank is equipped with one (1) filling lid and one (1) discharge pipe with shut-off valve each.
 One (1) pneumatically driven self-sucking waste-oil pump with spring loaded hose-reel. Hose-reel with 10m hose 1 ½" and discharge nozzles stored and secured at appropriate position on platform.
10. 1 x water-pump with 400 ltr tank
- One (1) 400 ltr water-tank, mounted inside body, connected with water-pump. water-pump pneumatically driven with around 100ltr/min at 7bar.
 Water hose ½" x 15m with spray-nozzle, lossen stored next to tank.

11. 1 x mechanic tool kit,
metric
for Engines, 100 parts



12. 1 x mechanic tool kit,
metric
80 parts



- 15. 1 x working floodlight Working floodlight 500 W with holder, to mount on different places inside and out-side
- 16. 2 x fire extinguisher 2 x ABC fire extinguisher 6kg, mounted with bracket below platform
- 17. 1 x securing rails and straps To fix and secure the equipment safely

We can offer you, according to your individual requirements, a comprehensive range of accessories.

**Detailed pictures of:
MOBILE WORKSHOP and LUBRICATION TRUCK**

**High Quality Product
MADE IN GERMANY**



Container body execution: Heavy-duty made of corrugated steel panels, strongly welded together with inner coating.



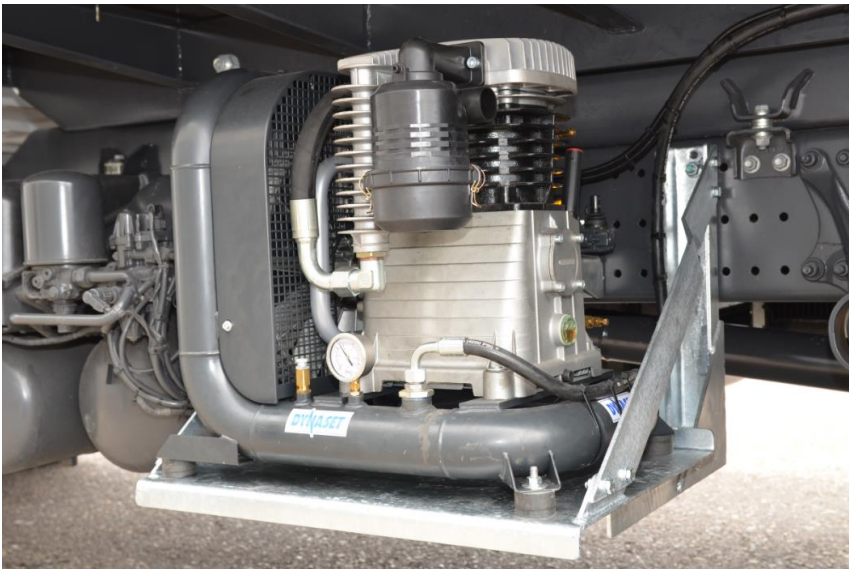
Winged rear door. Opening 270 degree. To be opened from in- and outside. Folding stairs, retractable, made of hot-dip galvanized steel for easy access.



Winged side door on right-hand side of the body with opening 180 degree.



The truck mounted workshop and lubrication unit offers a universal support for various maintenance, repair and service works



Air compressor.

Driven hydraulically by the PTO of the truck.

Hydraulic system equipped with oil-cooler.

The air compressor is mounted on truck chassis, left-hand side.

OPTIONAL:

Air compressor mounted in lockable protection box.



Two additional air tanks mounted underneath the workshop container body. Left-hand side.



View inside of the workshop container. Left-hand side 5 hose reels. Right-hand side: 2 hose reels and water tank.



Behind (left) 3 oil bulk containers. Behind (right) genset. Genset power on customer requirement.



1 x oil bulk container 1000 ltr. (behind) for waste oil and 2 x oil bulk containers à 640 ltr. for different kind of oil



All supply pipes for oil are well protected under corrugated sheet metal (easy removable).



Leftmost: 1x hose reel for safe suction of waste oil. Above that (left, on metal base) self-priming waste oil pump.
Middle: 4 x hose reels for different kind of oil.
All TECALEMIT hose-reels with 15m hose, integrated flow-meter and discharge nozzle.



2x 250 ltr round steel tanks for oil. Before them the TECALEMIT unit with 5 x hose reels and waste-oil pump.



View of the self-priming waste oil pump.



1 x TECALEMIT hose reel for 250 ltr. steel oil tank (behind, blue). 1x hose reel with air hose and air pistol.
Rightmost: 400 ltr. water tank (white), it can be used for water or coolant. Water supply by separate hose ½" x 15m with spray-nozzle.



Rear view of TECALEMIT hose reel unit with two hose reels for air and oil and the suitable pump.
Behind right the white 400 ltr. water tank.



Workbench with solid forged steel parallel vice and drawer rack.

Underneath stored: 15 m water hose with spray-nozzle.

Left of workbench:

High pressure *PRESSOL*, Germany foot press for grease, oil and lubrication.



Detail of workbench:

High quality rack with 5 steel sheet drawers.

All drawers with secured openers



Overview of the workshop container with foot grease pump and workbench in front and 4 steel tanks for oil and water. The closed container door behind.



Inside view of drivers cabin: Very large double cabin.



Equipment boxes with much storage space under the 4 rear seats



Comfortable drivers double cabin with totally 6 seats and a lot of room.

This special workshop & lubrication truck can be mounted on truck chassis of the following manufactures:

- Mercedes-Benz
- MAN
- IVECO
- VOLVO
- SCANIA
- RENAULT
- ISUZU
- etc.

Please do not hesitate to contact us for further information and your **special requirements**.

All trucks and workshop / lubrication containers are **custom-made**.

High Quality Product
MADE IN GERMANY

Some names of actual companies and products, mentioned herein may be trademarks. They are used for reference purpose only and are property of the respective owners.

OPTIONS for the workshop container

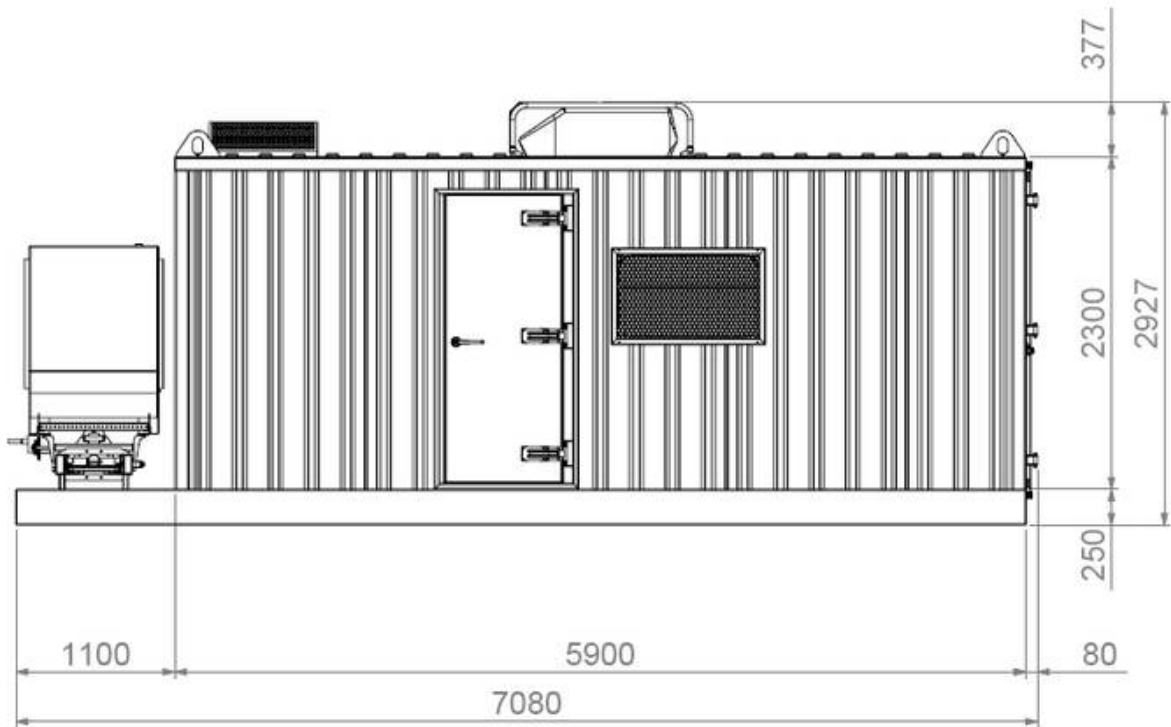
1. Electrical welding machine
2. Oxyacetylene welding
3. Plasma MIG welding machine
4. Genset with different power
5. Centre lathe machine
6. Air compressor
7. Hydraulic, mechanical or electrical crane or hoist
8. High pressure cleaner (cold and warm water, steam)
9. Tools cabinets (steel sheet) above, fixed at the container walls (under the container roof, above work bench etc.)
10. Workshop-container insulated and air-conditioned or / and heated
11. Instead truck with double-cabin longer (or shorter) workshop-container
12. Winged side door on right- (or left-) hand side of the body with opening 180 degree.
13. Heavy duty hydraulic knuckle boom crane between truck cabin and workshop-container
14. Workshop-container executed as a separate unit to be placed independent from the truck
15. Special workshop-container for 4x4, 6x6 or 8x8 trucks for extreme off-road application in rough areas

OPTION for the workshop container



Example: Insulated workshop container (A/C) with turning lathe machine, crane etc.

OPTION for the workshop container



Example: Workshop-container executed as a separate unit to be placed independent from the truck

Please do not hesitate to contact us for further information and your **special requirements**.

All trucks and workshop / lubrication containers are **custom-made**.

High Quality Product
MADE IN GERMANY

Some names of actual companies and products, mentioned herein may be trademarks. They are used for reference purpose only and are property of the respective owners.